

1

2

3

4

D

D

C

C

B

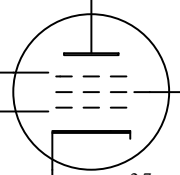
B

A

A



RCA



120v

103v

2.7v

1.2K

100uF/10V

100

50K

100K

285v

390K

1uF/400v

33uF

47k

0.15uF/1000v

330K

1K

30

30

59.6v

110uF/150v

300B

370v

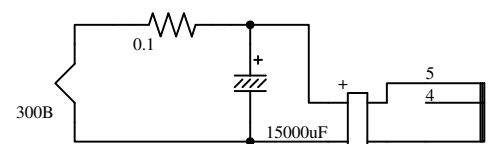
5uF/400v

30k

JS-6123HS

8

0



300B

0.1

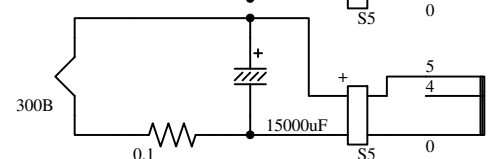
15000uF

S5

5

4

0



300B

0.1

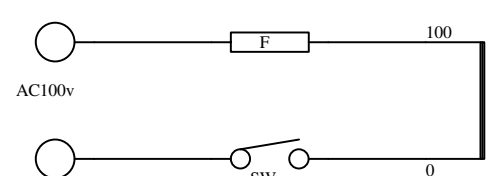
15000uF

S5

5

4

0



AC100v

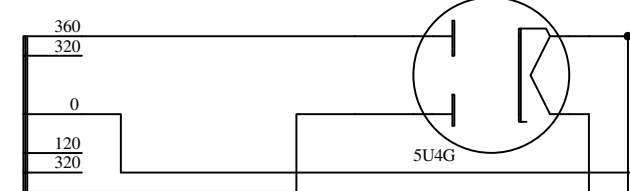
F

100

SW

0

MS-200CT-A



360

320

0

120

320

360

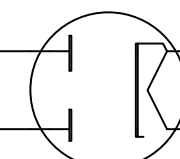
5

0

10

6.3

0



5U4G

396v

A-395

382v

40

10uF/450v

80uF/400v

60uF/400v

+

+

+

0

0

0

Lch

EF37A

EF37A

PL